

INDIGEN TECHNOLOGIES

We are an established software company that focuses on developing software solutions and products for Engineering, Scientific, Industrial Automation and Web-enabled applications for various domains.

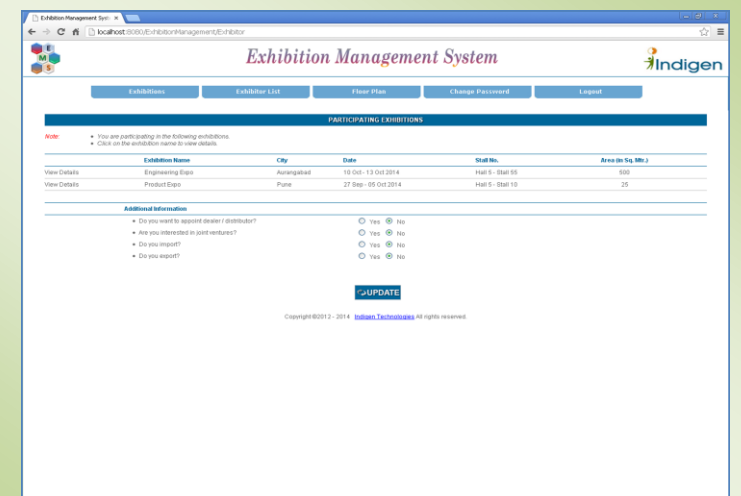
Exhibition Management System

Exhibition Management System (EMS) is a web based solution. It facilitates the users like Exhibition Organizers and Exhibitors (participants) to manage data online that is required for the exhibitions.

The main features of the application are: Online floor plan design, Stall booking, Management of exhibitor requirements like furniture, services, power etc., Email/SMS notifications to exhibitors.



Software Solutions for
automation needs



Exhibition Management System



FEATURES FOR ORGANIZER

Online Design:

- 2D graphical floor plan.
- Create stalls of island type, rectangular or L shape.
- Create multiple stalls in a row/column on single click.
- Supports one or more halls as per EMS version.

Online Booking:

- Configure stall price with booking amount percentage.
- Configure colors according to stall size and booking status.
- View list of booked stalls with stall no and exhibitor name.
- Reserve one or more Stalls.
- Save payment details of cheque / DD etc.
- Supports online payment (optional).

Email and SMS:

- Various types of email and SMS are sent automatically.
- View the status of the emails and SMS sent.

Configurable Features:

- Configure Furniture, Additional Power, Compressed Air, Services, Vendor and Country-State-City.
- Configure participation certificate.
- Configure vendors' information.
- Configure important contacts.

Import/Export:

- Import exhibitors details from excel file.
- Import country, state, city lists from excel file.
- Export opening ceremony invitees details to excel file.
- Export all exhibitors' details as per exhibition to excel file.
- Export floor plan to PDF file.

Manage/View:

- Manage master exhibitors list.
- Manage exhibitor's check-in/out status.
- View Exhibitor's directory profile, products and payment details.
- View Information of company representatives at stall.
- View exhibitor's fact sheet.
- View the enquiries of the exhibitors.

Search Exhibitor:

- Displays the list of exhibitions in which the exhibitor is participating and has participated.

Upload:

- Upload documents like terms and conditions, guidelines etc.

FEATURES FOR EXHIBITOR

Online Booking:

- View 2D graphical floor plan.
- View list of blocked, booked and available stalls.
- View the stall price with booking amount percentage.
- Block one or more consecutive stalls for configured period.
- Book one or more consecutive stalls.
- Specify type of stall i.e. bare space or shell type at the time of booking.
- Pay online (optional).

Email and SMS:

- Send enquiries.
- Receives important emails and SMS like reminders for balance payment, forms submission, stall plan approval status etc.
- Send opening ceremony invitation.

Send Requirements for:

- Furniture and accessories.
- Additional power, compressed air.
- Send details of bare space stall plan with images.
- Fascia details.

Download:

- Download floor plan in PDF format.
- Download participation letter, Fact sheet etc.

Print:

- Entry and Exit form.
- Fact sheet.

Search:






- Top 25 exhibitors for the selected product.

Submit:

- Exhibitor directory profile.
- Stall representatives' information.
- Machinery information.

View:

- List of Exhibitions, in which the exhibitor is participating.
- List of forms with Status.
- Payment details.
- View important contacts.

FURNITURE & ACCESSORIES REQUIREMENT										
Industrial Expo 2014 - Pune 25 Oct - 01 Nov 2014 Shivani Complex, Shivajinagar, Pune, Maharashtra, India										
<ul style="list-style-type: none"> • Following is a list of furniture & accessories available on rental basis during the exhibition. • Kindly fill the quantity as per your requirements. • Click on image thumbnail to view enlarge picture. 										
Item Code	Description	Image	Dimensions (in Ft.)				Rate (Rs)	Qty	Amount (Rs)	
			Height	Width	Depth	Dia.				
TM001	Lockable Cupboard		10	10.0	9.0		2000.00	<input type="text" value="2"/>	4000.00	
TM002	Plasma Screen 27inch		20	18.0	5.0		90000.00	<input type="text" value="0"/>	0.00	
TM003	Reception Counter		5	10.0	5.0	1.0	1000.00	<input type="text" value="1"/>	1000.00	
TM004	Round Table		8	10.0	3.0		200.00	<input type="text" value="1"/>	200.00	
TM005	Visitor Chair		2	4.0	1.0		100.00	<input type="text" value="4"/>	400.00	
								Gross Total (Rs)	5600.00	
								(Inclusive of Service Tax, VAT)	Tax (Rs)	1120.00
								Net Total (Rs)	6720.00	
<input type="button" value="← BACK"/> <input type="button" value="✓ SUBMIT"/>										

ENTRY / EXIT FORM			
Engineering Expo - Aurangabad 10 Oct - 13 Oct 2014 Bhakti Shakti, Bajaj Road, Aurangabad, Maharashtra, India			
Note: <ul style="list-style-type: none"> • You have to submit three copies of this form along with your Participation Letter for stall possession and exit • You can download Participation Letter from Downloads section of Exhibition Main Page. 			
Hall Number	<input type="text" value="5"/>		
Stall Number	<input type="text" value="55"/>		
Person Name	<input type="text" value="Manoj Bhosale"/>		
Designation	<input type="text" value="Sales"/>		
Company	<input type="text" value="Indigo Systems"/>		
Address	<input type="text" value="Baner"/>		
City	<input type="text" value="Pune"/>		
Pin	<input type="text" value="411045"/>		
Telephone	<input type="text" value="091"/>	<input type="text" value="020"/>	<input type="text" value="565588887"/>
Fax	<input type="text" value="091"/>	<input type="text" value="020"/>	<input type="text" value="66668856"/>
Sr.	Items / Goods	No. of Cases / Packing brought In <small>(to be filled up while Stall Possession)</small>	No. of Cases / Packing Taking Out <small>(to be filled up while Exit)</small>
1	box	<input type="text" value="8"/>	<input type="text" value="8"/>
<input type="button" value="Add"/>			
		Authorised Signatory ABC Company	Authorised Signatory Indigo Systems
<input type="button" value="← BACK"/> <input type="button" value="✓ SUBMIT"/> <input type="button" value="PRINT"/>			

Exhibition Management System
Exhibition Management System

* Due to continuous developments, specifications are subject to change without prior notice.